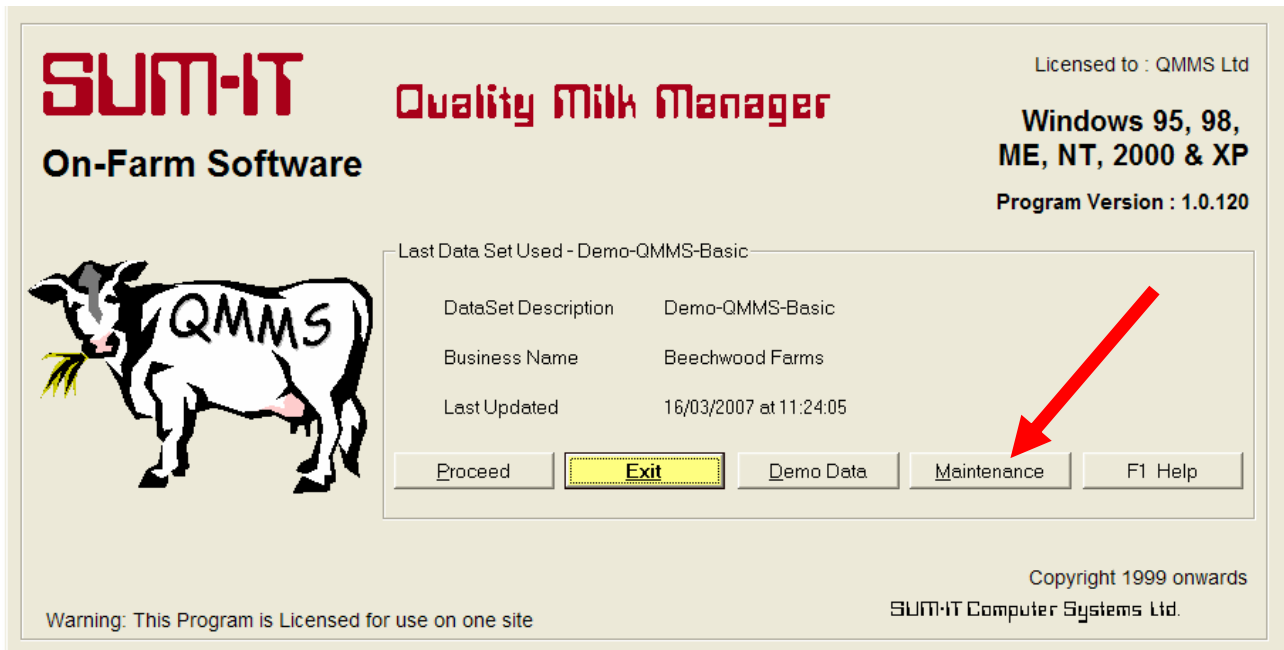
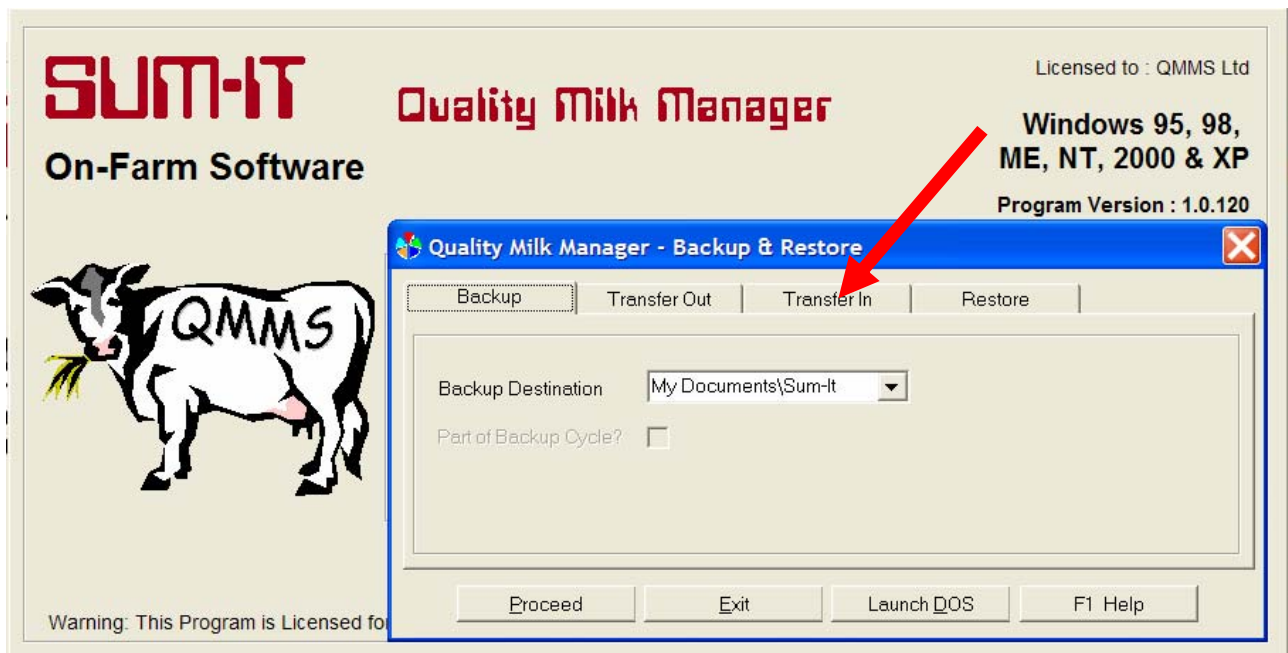


Importing Your Milk Recording Data into Quality Milk Manager

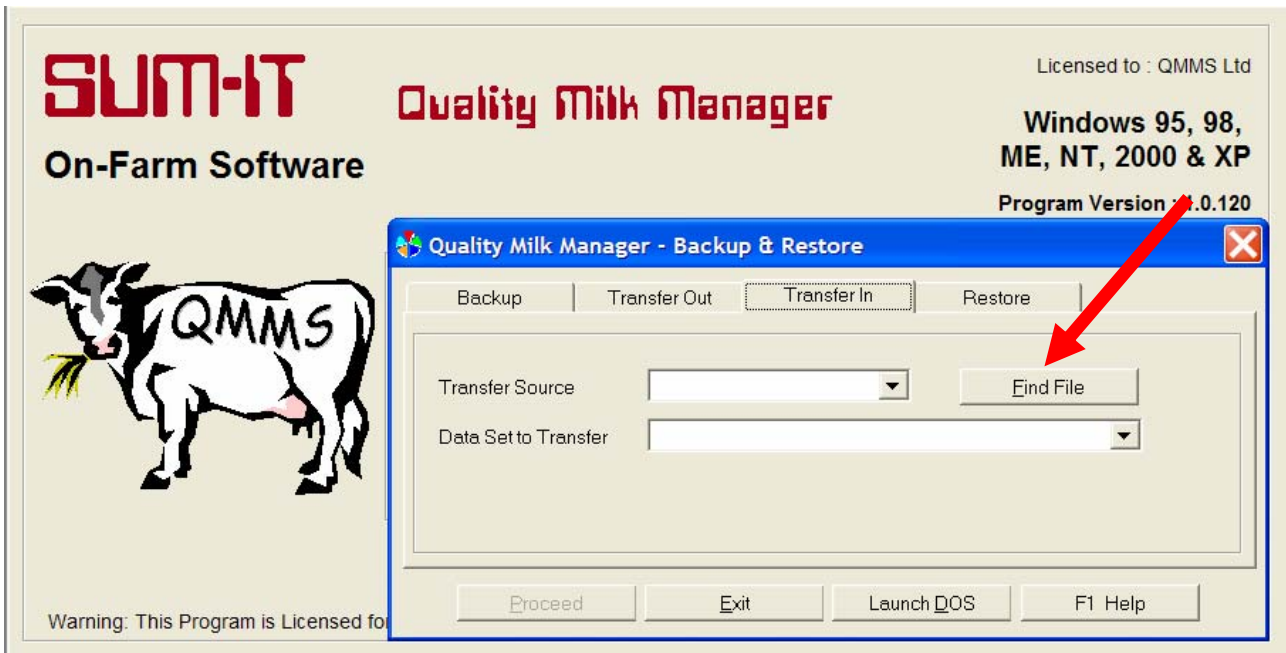
Launch Quality Milk Manager



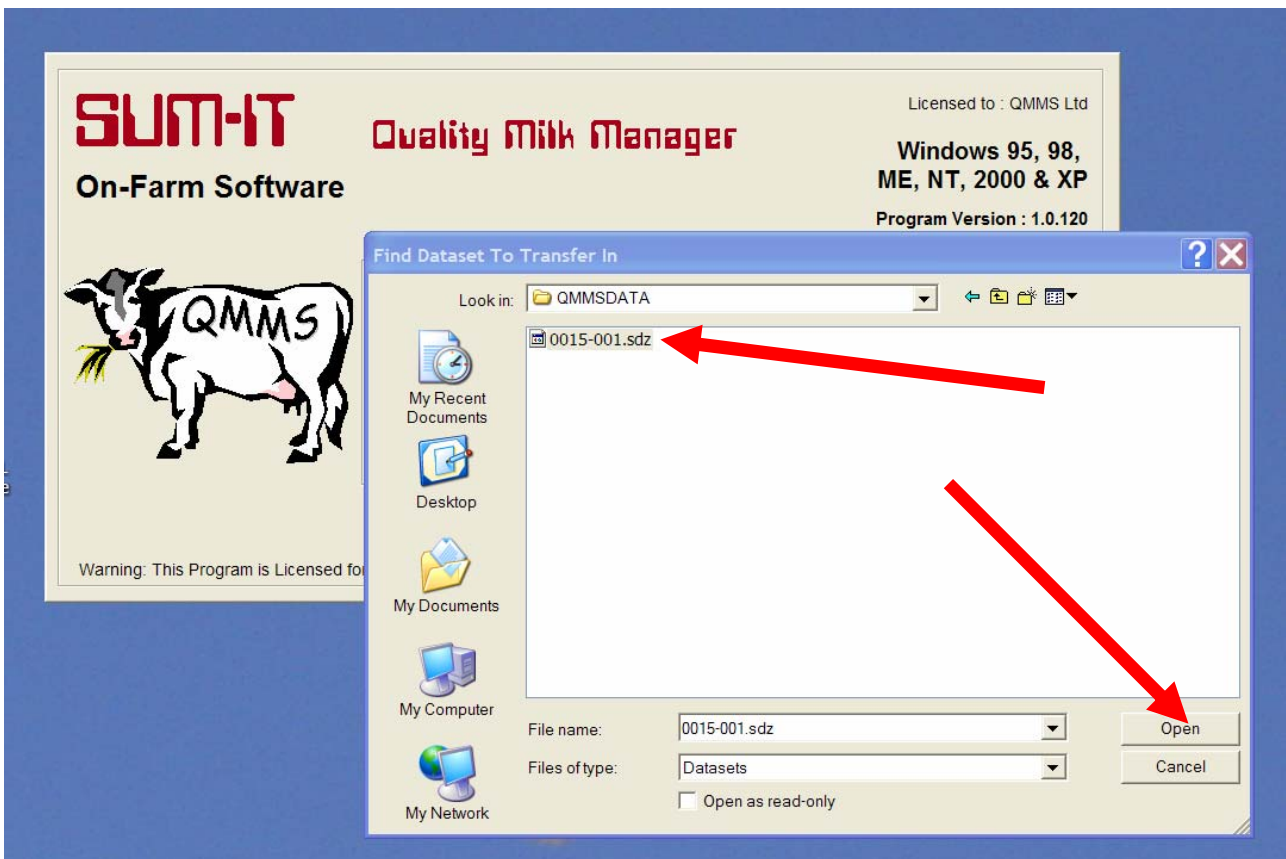
Click on the 'Maintenance' button



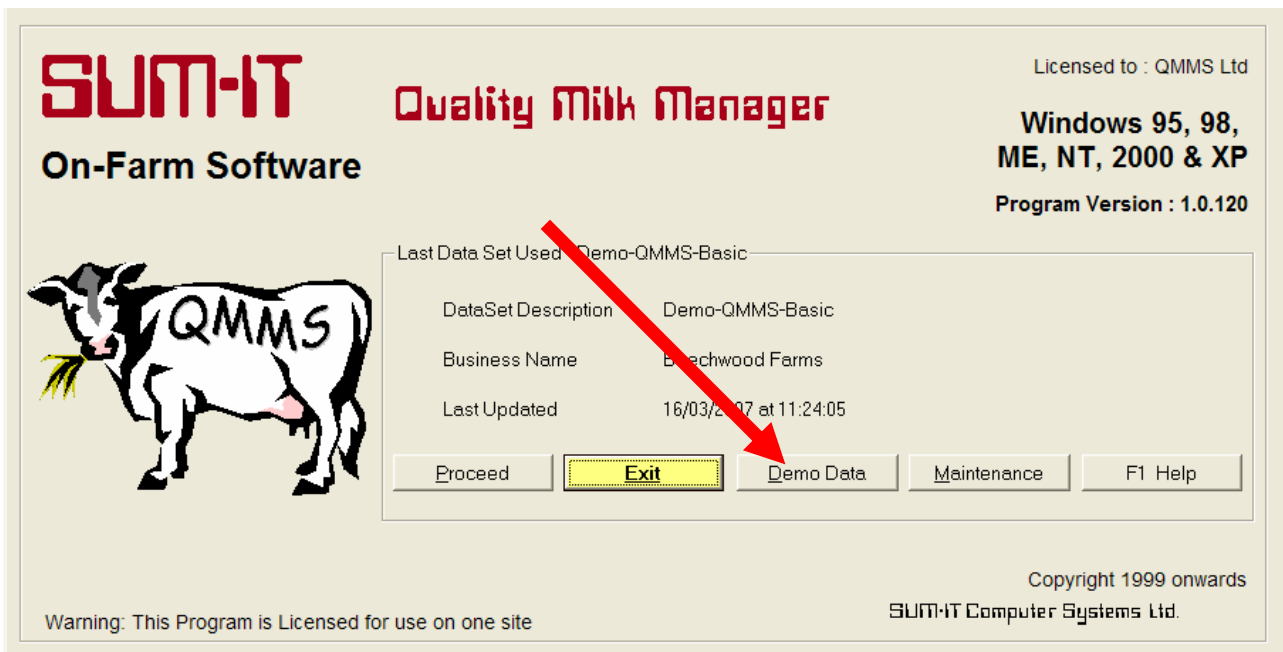
Select the 'Transfer In' tab



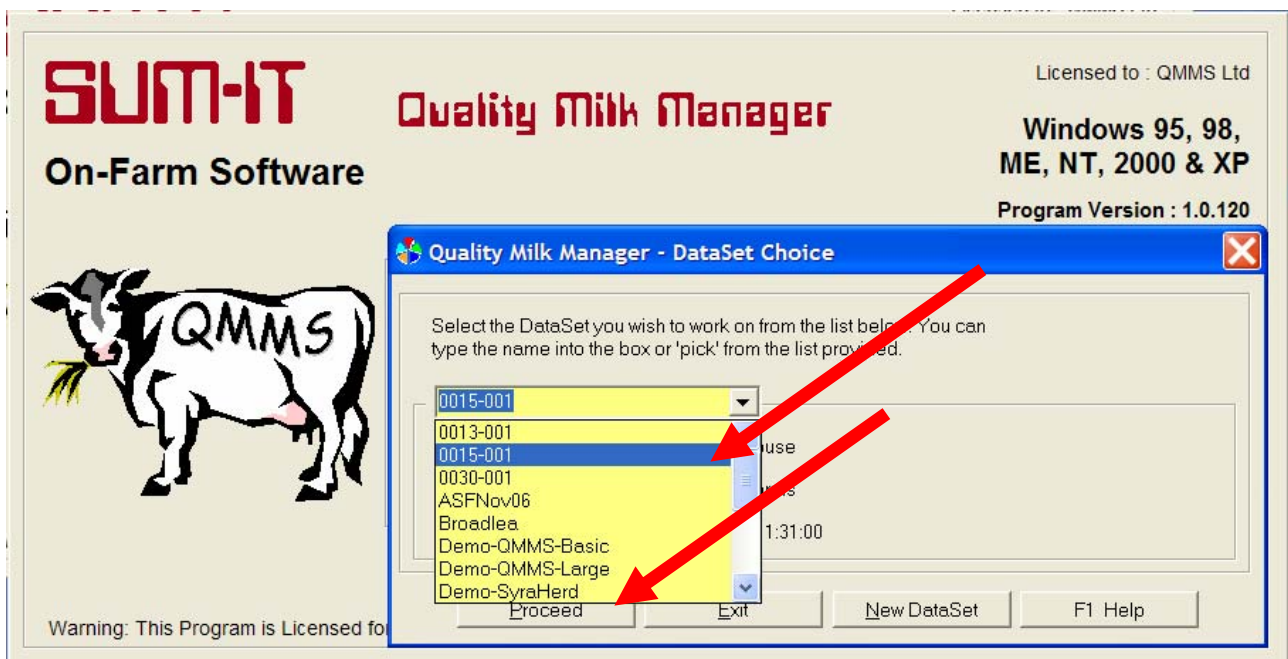
Click on the 'Find File' button



Browse to find the .sdz file, highlight and click 'open'



Return to front screen and click on 'Demo Data' button



Select dataset and click 'Proceed'

You should now be able to view your up to date reports.

For Technical Support Telephone: 01749 871 171